

A stylized map of Ontario, Canada, in shades of blue. A circular callout with a white center and an orange border highlights the location of Thunder Bay on the western shore of Lake Huron. The text 'THUNDER BAY' is positioned above the large 'CEDC' logo, and 'COMMUNITY ECONOMIC DEVELOPMENT COMMISSION' is positioned below it.

THUNDER BAY
CEDC

**COMMUNITY ECONOMIC
DEVELOPMENT COMMISSION**

www.ThunderBayCEDC.ca

2019-2022 Strategic Action Plan

Mission:

To Grow and Diversify our Economy

Principle:

To operate in a way that is project based, business led,
community supported and partner driven.

Mandate:

The CEDC is tasked to be the primary independent Economic Development
Agency for the City of Thunder Bay.

Vision:

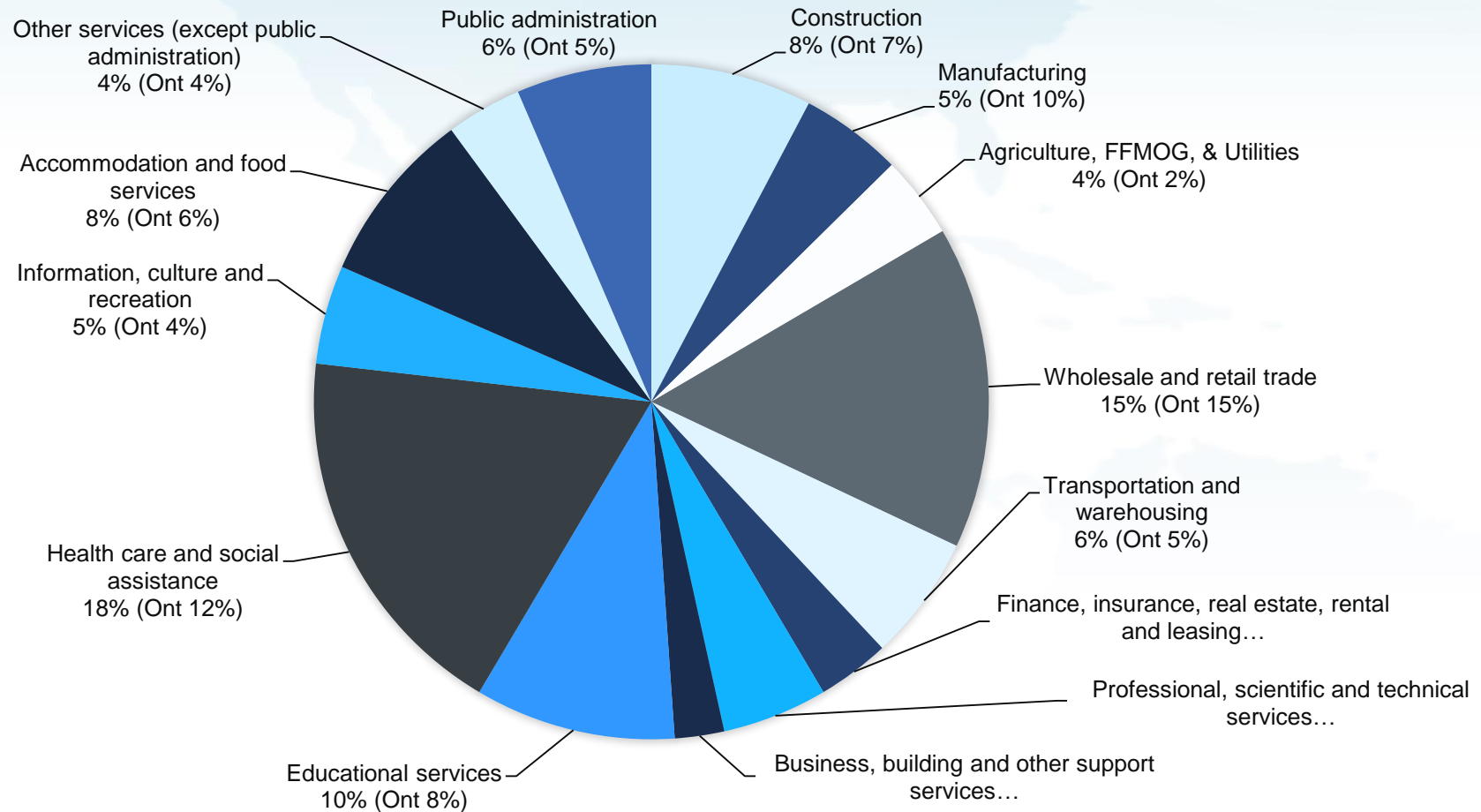
To Become a World Leader in Economic Growth and Prosperity

Thunder Bay Labour Force Characteristics History

Thunder Bay Labour Force Characteristics (15 years and over)																			
	2001	2002	2003	2004	2005	2006	2007	2008	2009	2010	2011	2012	2013	2014	2015	2016	2017	2018	2019 YTD
Population (x 1,000)	101.7	102.1	102.9	103.6	104.0	104.0	103.9	103.8	103.9	104.3	104.5	104.7	104.8	104.7	104.6	104.7	104.8	104.8	104.7
Labour force (x 1,000)	67.1	65.7	69.7	68.9	68.8	66.2	67.4	66.2	65.4	64.5	64.8	65.4	66.9	65.0	62.9	64.5	65.2	67.1	65.0
Employment (x 1,000)	61.0	61.1	65.5	63.3	63.9	61.2	62.8	62.3	60.0	60.2	60.3	61.8	62.8	61.5	59.7	60.1	61.5	63.6	61.2
Full-time employment (X 1,000)	48.2	47.3	50.1	49.0	47.9	47.5	48.5	47.4	45.3	45.4	46.5	47.9	48.6	47.3	45.9	46.6	47.4	49.5	
Part-time employment (x 1,000)	13.4	14.1	15.4	14.4	15.9	13.6	14.3	14.9	14.6	14.7	13.8	13.9	14.2	14.2	13.7	13.5	14.1	14.2	
Unemployment (x 1,000)	5.4	4.3	4.1	5.6	4.9	5.0	4.5	3.9	5.4	4.4	4.4	3.6	4.1	3.4	3.3	4.4	3.7	3.4	3.8
Not in labour force (x 1,000)	34.6	36.4	33.2	34.6	35.3	37.8	36.5	37.6	38.5	39.7	39.7	39.3	37.8	39.8	41.7	40.2	39.6	37.7	
Unemployment rate (percentage)	8.0	6.5	5.9	8.1	7.1	7.6	6.7	5.9	8.3	6.8	6.8	5.5	6.1	5.2	5.2	6.8	5.7	5.1	5.8
Participation rate (percentage)	66.0	64.3	67.7	66.5	66.2	63.7	64.9	63.8	62.9	61.8	62.0	62.5	63.8	62.1	60.1	61.6	62.2	64.0	62.1
Employment rate (percentage)	60.6	60.1	63.7	61.1	61.4	58.8	60.4	60.0	57.7	57.7	57.7	59.0	59.9	58.7	57.1	57.4	58.7	60.8	58.5

Thunder Bay's Diverse Economy As Measured by Employment

Canada Mortgage and Housing Corporation (CMHC)



Major Employers

Employer	Business Type	Employees
Thunder Bay Regional Health Sciences Centre	Acute Health Care Hospital	2,824
Lakehead District School Board	Elementary & Secondary Education	2,200
St. Joseph's Care Group	Complex Care, Rehabilitation, Mental Health & Addiction Services, Long Term Care	2,150
Lakehead University	Post-Secondary Education & Training	2,100
City of Thunder Bay	Municipal Government	1,855
Government of Ontario	Provincial Government	1,840
Thunder Bay Catholic District School Board	Elementary & Secondary Education	1,500
Bombardier Transportation	Mass Transportation Equipment Manufacturing	1,100*
Confederation College	Post-Secondary Education & Training	785
Resolute Forest Products	Pulp & Paper Mill – Mill 419 employees; Sawmill – 223 employees	642
Total		16,996

Post-Secondary Education & International Students



- Lakehead University is the university of choice for students from 78 countries:
 - 9% of all full-time undergrad students (768)
 - 49% of all full-time graduate students (643),
 - Total of 1,411 international students on campus 2018/2019



Confederation College

- 6,500 Full time and part time students
- 1,250 International Students from 25 Countries (15%)

Rural & Northern Immigration Pilot

- A community-based immigration pilot to test targeted attraction and settlement approaches at the local level.
- Thunder Bay was one of the 11 Canadian cities chosen to participate
- Guiding Principles:
 - Community-driven and responsive to local economic development needs.
 - Focused on retention and economic independence of newcomers.
 - Complementary to other federal and provincial immigration initiatives.
 - Outcomes-driven with a strong results framework.
 - Part of the solution, not the only solution to economic growth.

Utility & Service Costs

- In Thunder Bay. Customers requiring less than 10 megawatts of electricity are serviced by the municipal-owned Synergy North
- Enbridge – Natural Gas provider for Thunder Bay
- Synergy North is the third-lowest cost electrical distributor in Ontario.

Electricity Distributor	Cost/1000 kWh of Power
Synergy North	\$177.81
PUC Distribution Inc. (Sault St. Marie)	\$178.26
Kitchener-Wilmot Hydro Inc.	\$178.38
Niagara-on-the-lake Hydro Inc.	\$179.35
Kingston Hydro Corporation	\$180.53
Energy Plus Inc. (Cambridge & North Dumfries)	\$180.53
PowerStream Inc. (Barrie)	\$182.17
Ottawa River Power Corporation	\$182.29

Port of Thunder Bay

- 900 Direct Jobs
- #1 Export Port on the Seaway
- #1 Grain Storage Capacity in Canada
- Updated rail and laydown on site
- New \$12M heated warehouse construction underway



Thunder Bay International Airport

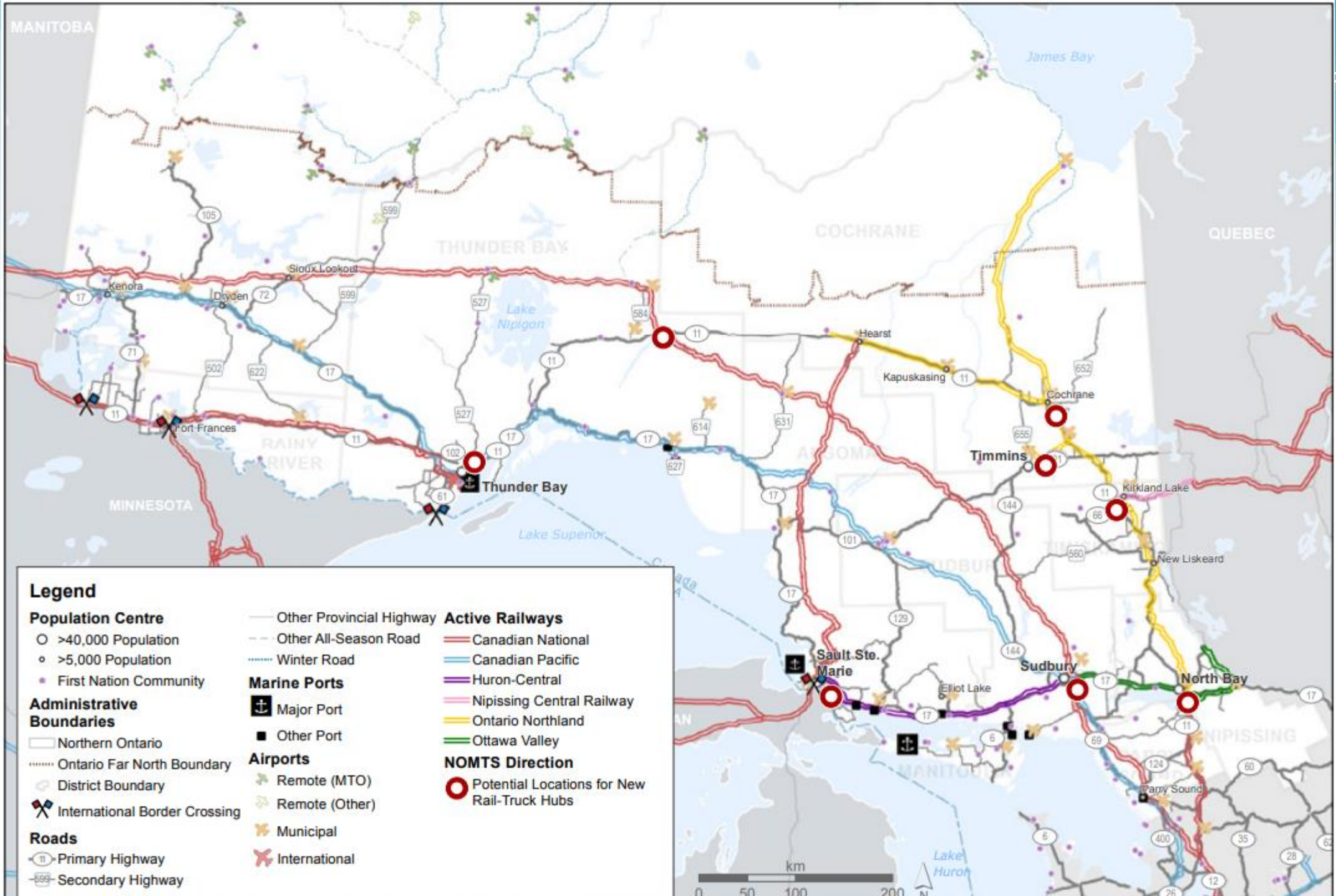


- Average 860,000 passengers annually
- 4 runways, longest being 7,318 ft x 200ft
- 3rd busiest airport in Ontario
- Development opportunities – 180 acres of serviced land for development
- Over 200 existing aviation and aerospace firms in Norther Ontario

Transportation Network

- TransCanada High way
- CN Rail and CP Rail

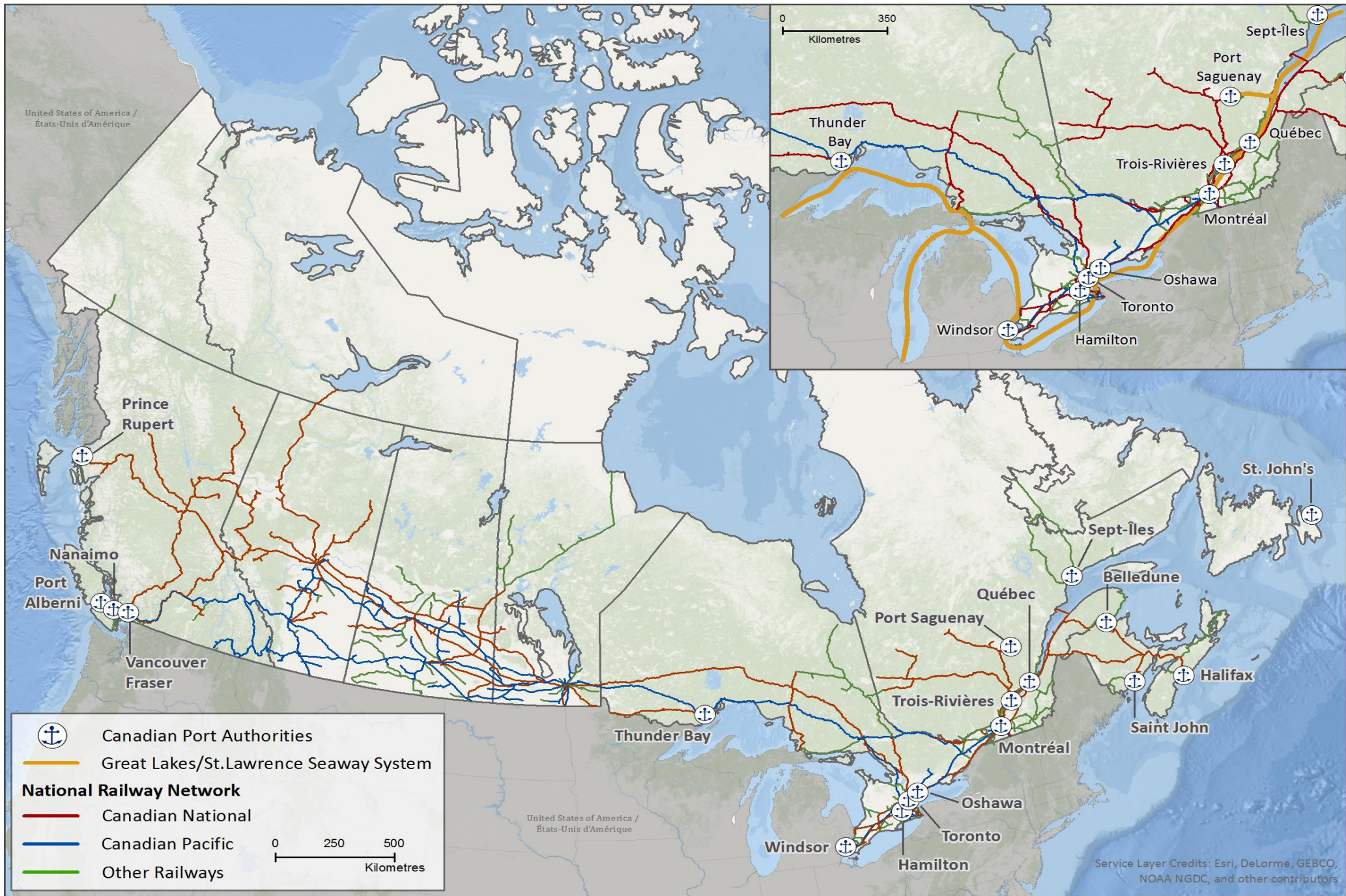




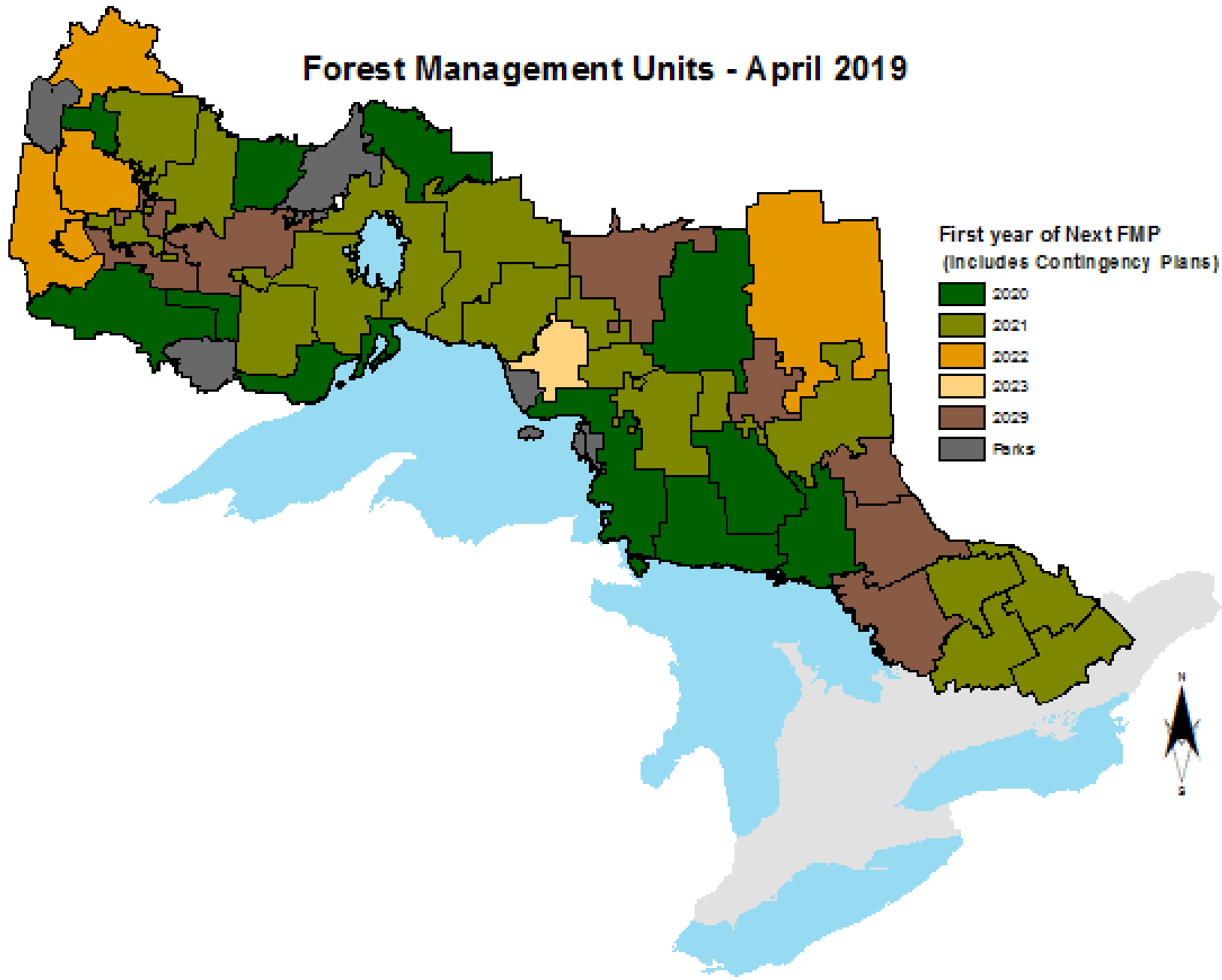
Legend

- | | | | |
|----------------------------------|-------------------------|-----------------------------|---|
| Population Centre | | — Other Provincial Highway | Active Railways |
| ○ >40,000 Population | — Other All-Season Road | — Canadian National | — Canadian Pacific |
| ◦ >5,000 Population | ⋯ Winter Road | — Canadian Pacific | — Huron-Central |
| • First Nation Community | Marine Ports | — Nipissing Central Railway | — Ontario Northland |
| Administrative Boundaries | ⚓ Major Port | — Ottawa Valley | — NOMTS Direction |
| □ Northern Ontario | ■ Other Port | NOMTS Direction | ○ Potential Locations for New Rail-Truck Hubs |
| ⋯ Ontario Far North Boundary | Airports | ➤ Remote (MTO) | |
| ⬭ District Boundary | ✈ Remote (Other) | ✈ Municipal | |
| ⚡ International Border Crossing | ✈ International | ✈ International | |
| Roads | | | |
| ① Primary Highway | | | |
| ② Secondary Highway | | | |





Forest Management Units - April 2019



Contact Us

Thunder Bay Community Economic Development Commission (CEDC)

PO Box 800

Suite 201, 34 Cumberland Street North

Thunder Bay, Ontario, Canada P7C 5K4

Tel: (807) 625-3960

Toll Free: 1-800-668-9360 (North America)

Fax: (807) 623-3962

Website: www.ThunderBayCEDC.ca